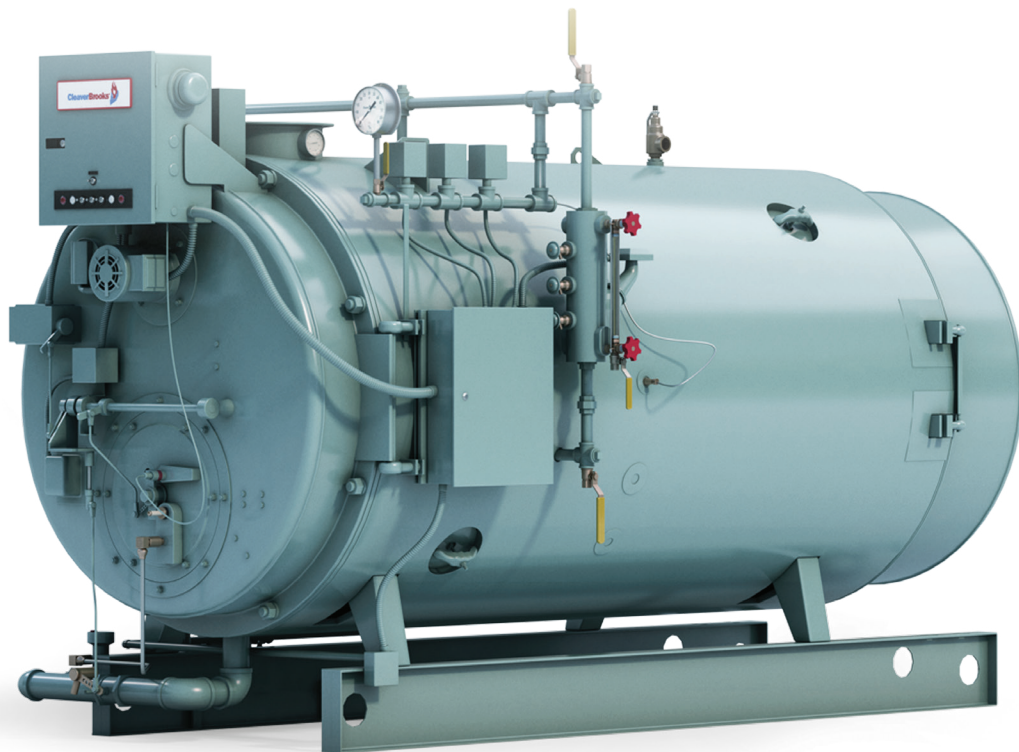


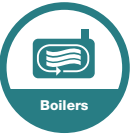
Courtesy of: C3 Surplus LLC  
Surplus Industrial Superstore  
305-428-2777  
<https://www.c3surplus.com>



# CB

## MODEL

15 - 100 HORSEPOWER  
COMBINATION GAS/OIL FIRING



# THE MODEL CB

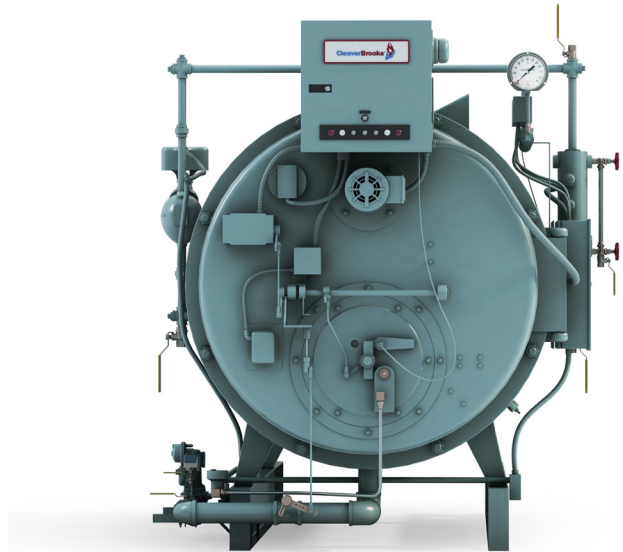
Offering easy installation, operation and maintenance.

The Cleaver-Brooks Model CB firetube boiler is an integrated package with components designed to work together seamlessly and provide a single source solution with optimal safety, ease of maintenance, and low emissions. The model CB options include:

- Steam or hot water
- 15 to 100 HP
- Natural gas, #2 and #6 oil, combination
- 15 to 250+ psig on steam, 30 to 125 psig on hot water

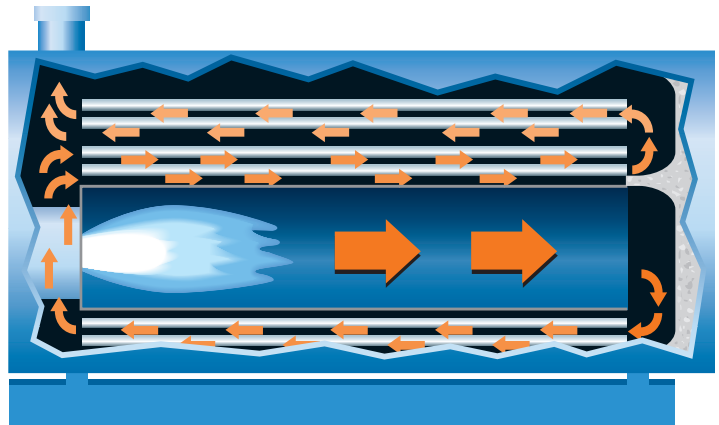
The CB dryback design includes 5 square feet of heating surface per boiler horsepower with maximum guaranteed efficiencies.

This package includes a pressure vessel, integral burner, and controls, including our LevelMaster low-water control on high-pressure steam units. The Hawk control can be added to further enhance your package.



## FOUR PASS INTEGRAL DESIGN

- Dryback boiler design
- Integral front head burner
- Maintains velocities
- Optimal radiant & convective heat transfer
- Saving energy
- Firing capability of gas and oil saves operating costs



**Packaged Boiler Systems**  
221 Law Street • Thomasville, GA 31792 USA  
800.250.5883 • info@cleaverbrooks.com  
cleaverbrooks.com

Courtesy of: **C3 Surplus LLC**  
**Surplus Industrial Superstore**  
**305-428-2777**  
**<https://www.c3surplus.com>**

